

CARNARVON PILOT HORTICULTURAL PROCESSING FACILITY CONCEPT DESIGN

5 September 2018



Curtin University

FUNDAMENTAL DESIGN PRINCIPLES

1. A standalone operation also capable of being integrated to the Gascoyne Gold existing grading operation subject to a suitable arrangement between the GDC, the Gascoyne Primary Producers and GG.
2. A clear traffic and access separation between staff/visitors and logistics supplying or dispatching products in and out.
3. The committed aspiration to rely on an off-grid carbon-free energy supply based on roof mounted photovoltaic panels and lithium battery storage.
4. A flexible construction system allowing for the cost-effective adaptation to a range of processes and equipment together with the expansion of the facility over time.
5. Compliance with health and food standards and regulations in force and the ability for the outgoing products to suitably access domestic, national and international markets.
6. Sufficient capacity to handle existing and prospective supply of selected seconds products

OFF-GRID SOLAR POWER SUPPLY

BENEFITS

- Maximum “decarbonisation” of the operation from the outset;
- Solar equipment CapEx partly offset against Horizon Power connection costs;
- Energy cost neutral within approximately seven years;
- Significant reduction of operating costs that can be passed on to growers and
- Measurable demonstrated energy savings for other Carnarvon businesses.

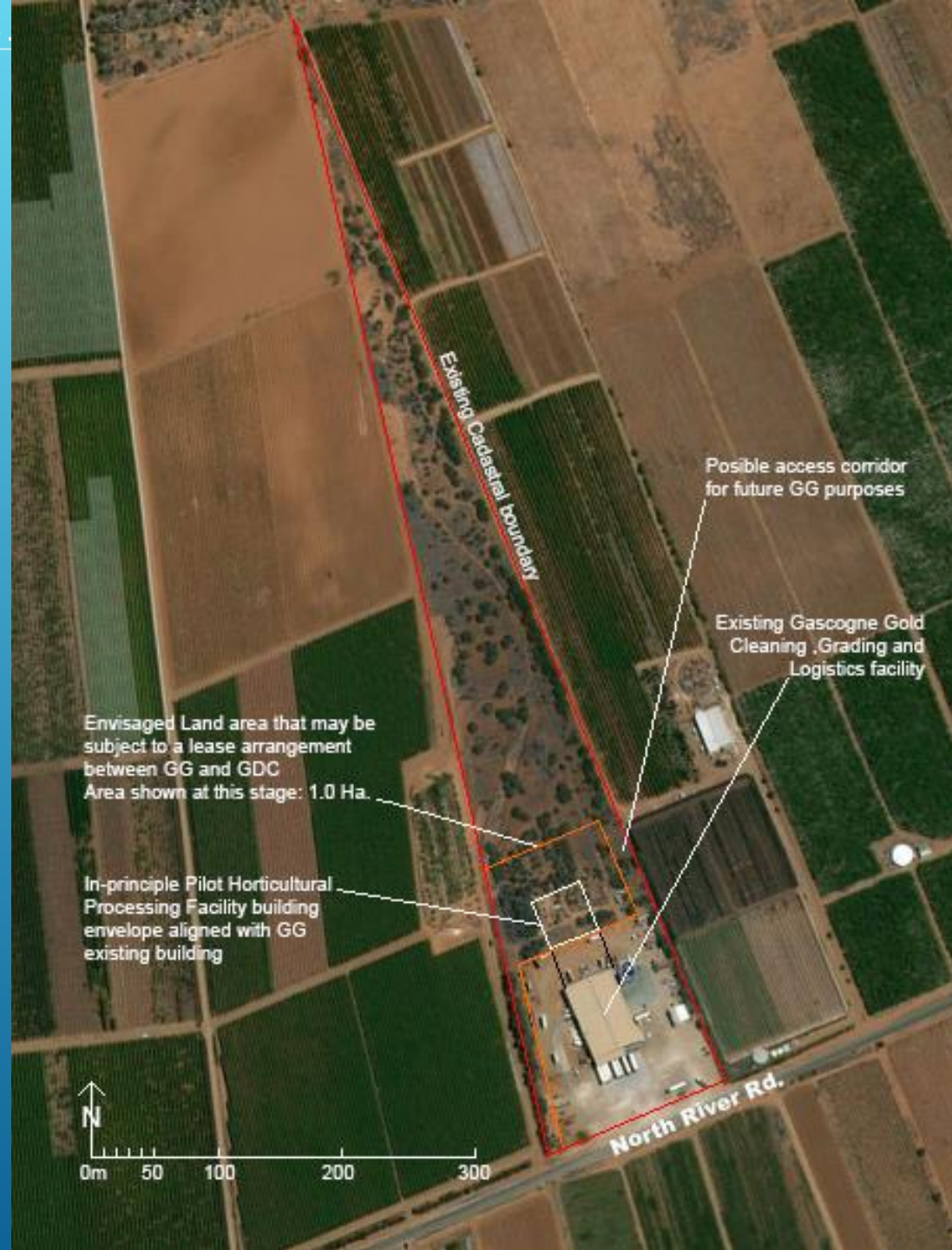
SYSTEM CHARACTERISTICS

- 900 x 330 Watts roof-mounted photovoltaic panels – 297 kW output
- 9 x 48 kW Tesvolt lithium batteries – 432 kW capacity

SUPPORTING DESIGN FEATURES

- Maximum 200mm thermal insulation (R 9.1) for freezers & cool rooms
- 150mm thermal insulation (R 7.1) for all other walls
- Systematic capture of natural lighting with high vacuum double glazed windows
- East & West facades set 7m inward from roof line to minimise direct sun heat load

GASCOYNE GOLD SITE





ACCESS, PARKING & GENERAL LAYOUT

Gascoyne Gold property boundary



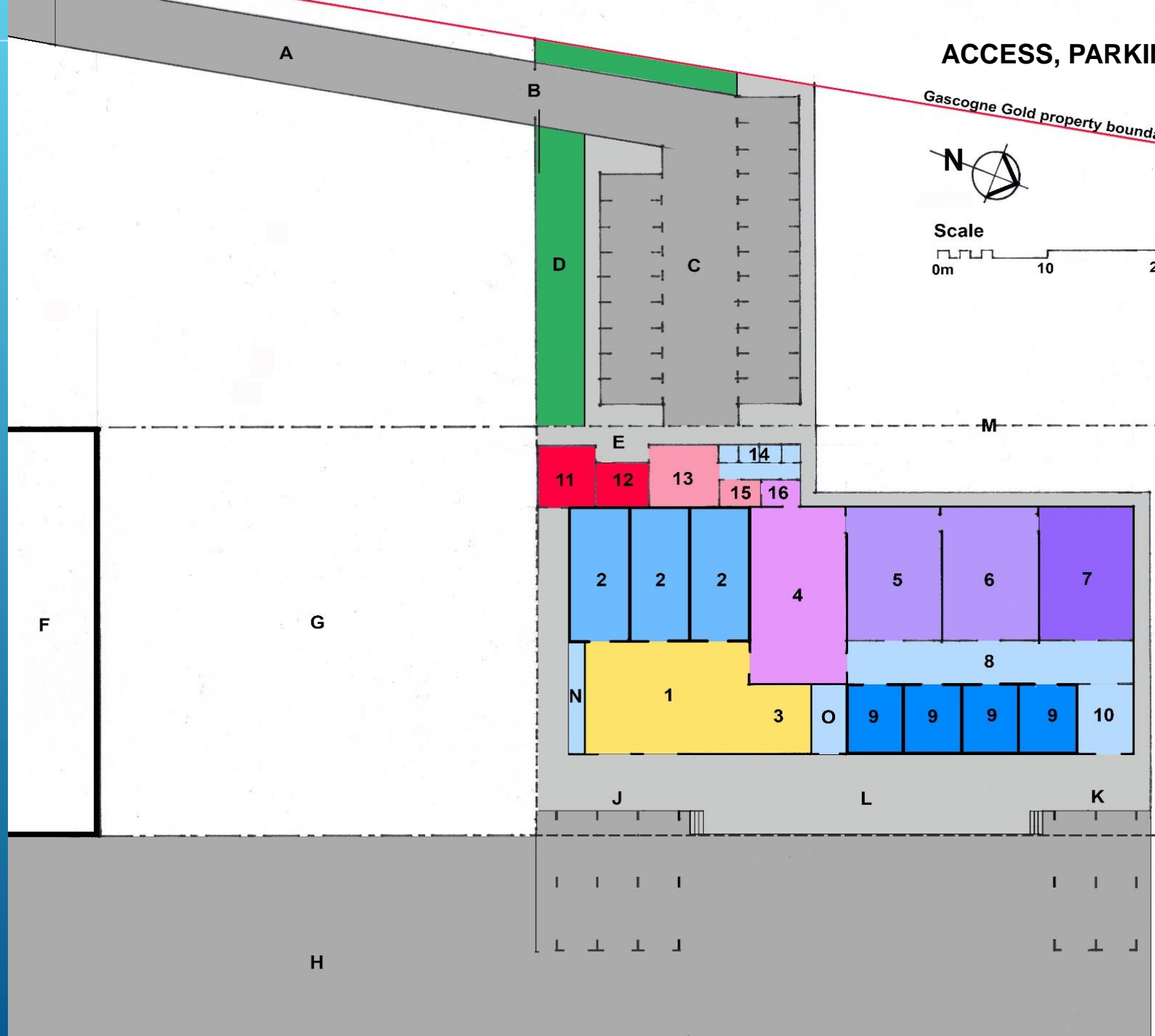
Scale

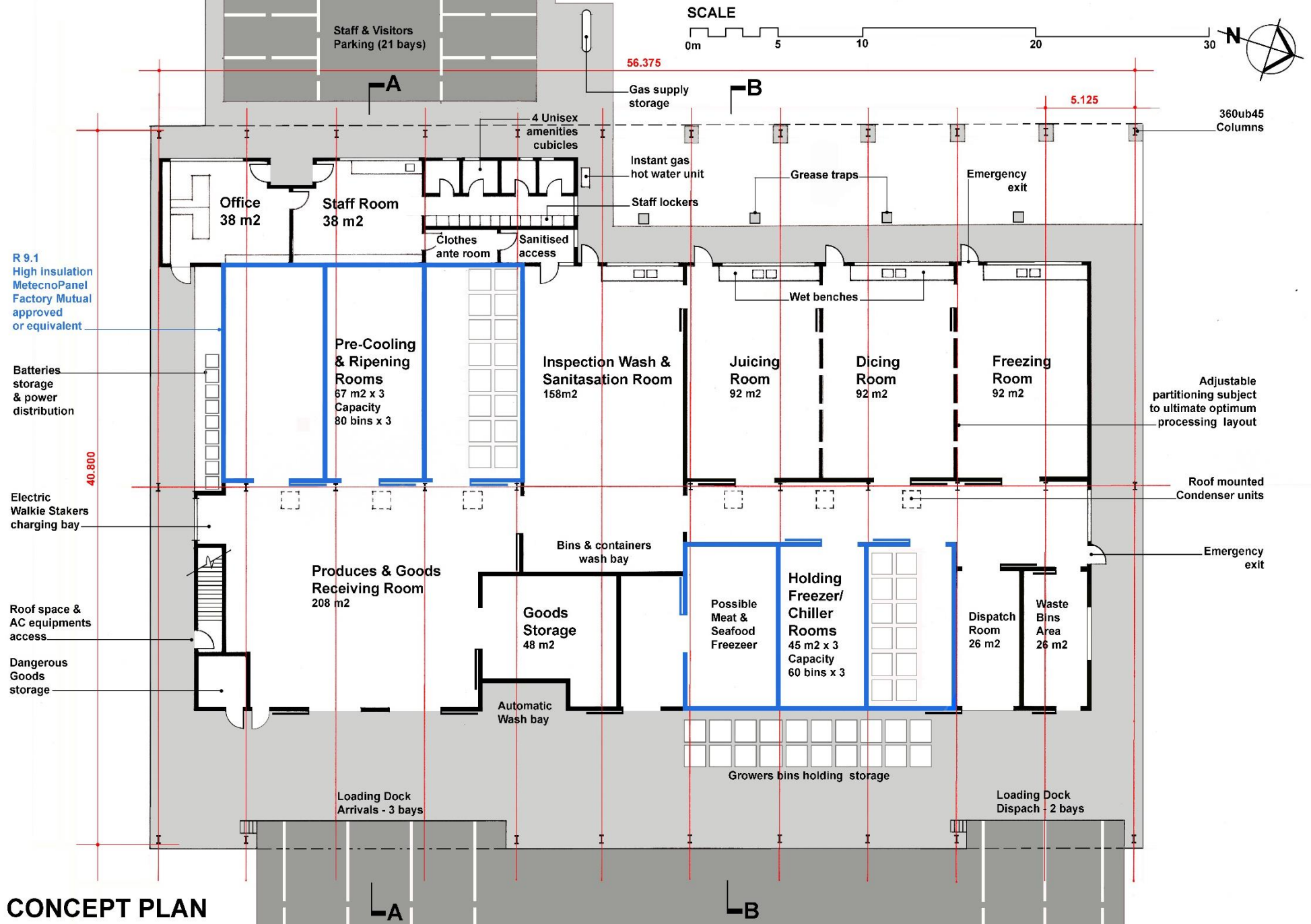


Legend

- A Light vehicles access
- B Controlled gate
- C Carpark - Staff & Visitors - 21 bays
- D Landscaping
- E Staff & visitors entry
- F Gascoyne Gold existing shed
- G Gascoyne Gold possible shed extension
- H Heavy vehicles access
- J Off loading - 3 bays
- K On loading - 2 bays
- L External bins storage
- M Edge of roof
- N Electrical storage & roof space access
- O Dangerous goods store

- 1 Receiving room
- 2 Pre-cooling & ripening rooms - (3 Nos)
- 3 Dry goods & packaging storage
- 4 Inspection & wash/sanitation room
- 5 Processing module - Juicing & purees
- 6 Processing module - Dicing
- 7 Freezing, weighing, X ray & labelling
- 8 Circulation
- 9 Holding freezers - (4 Nos)
- 10 Dispatch room
- 11 Office
- 12 Meeting room
- 13 Staff room
- 14 Unisex cubicles with shower - (4 Nos)
- 15 Shoes & clothes ante room
- 16 Sanitised access room



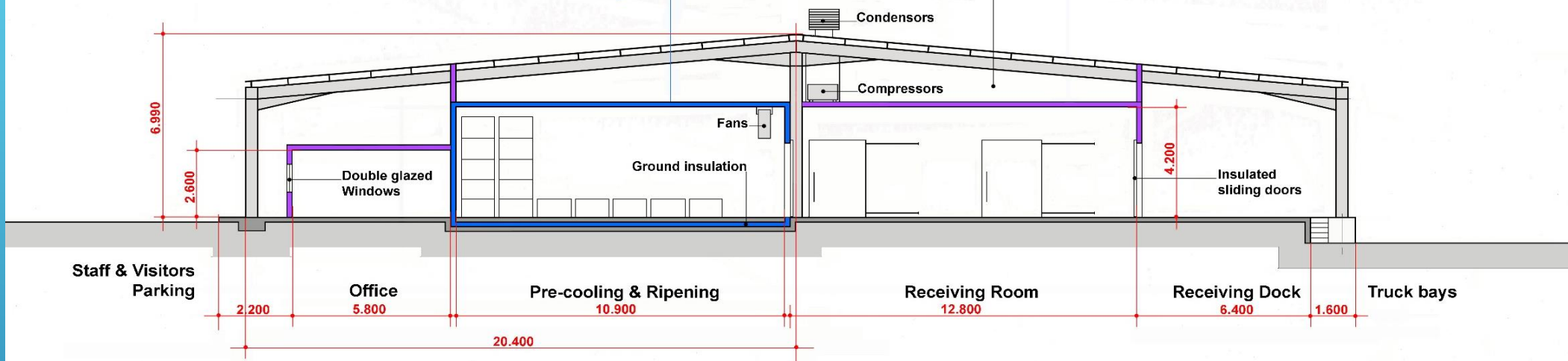


CONCEPT PLAN

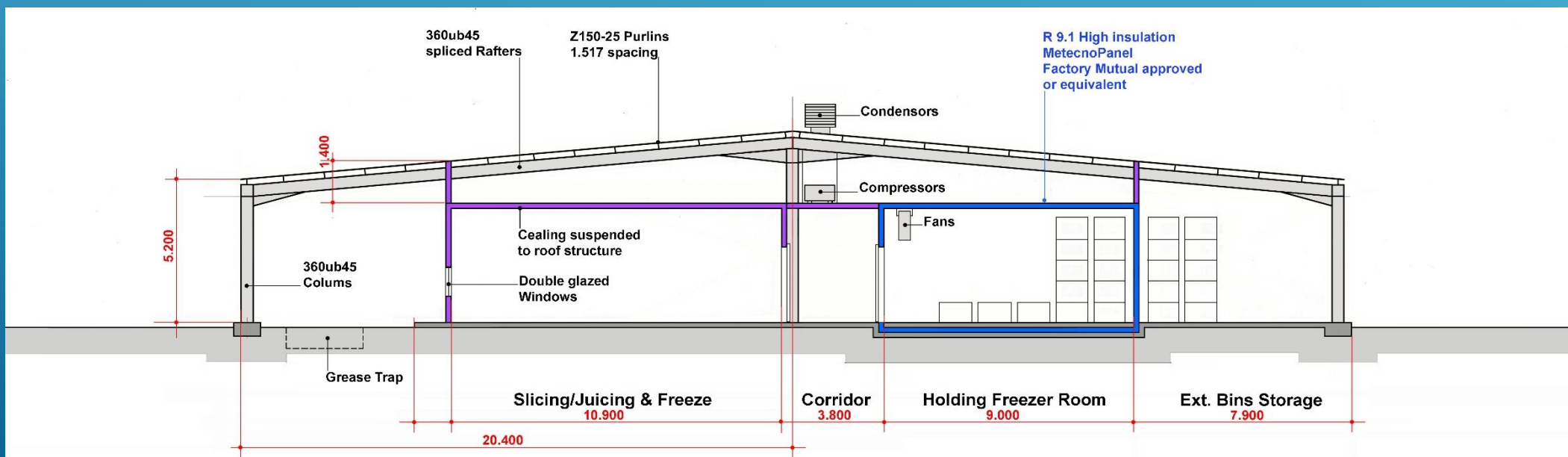


R 9.1 High insulation
MetecnoPanel
Factory Mutual approved
or equivalent

Accessible roof space
for services distribution &
AC equipment maintenance

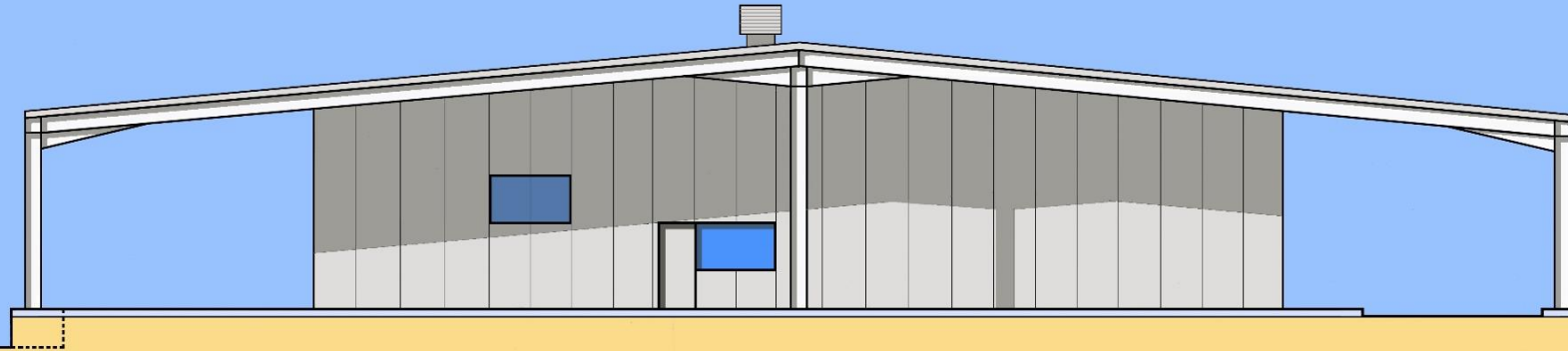


SECTION AA



SECTION BB





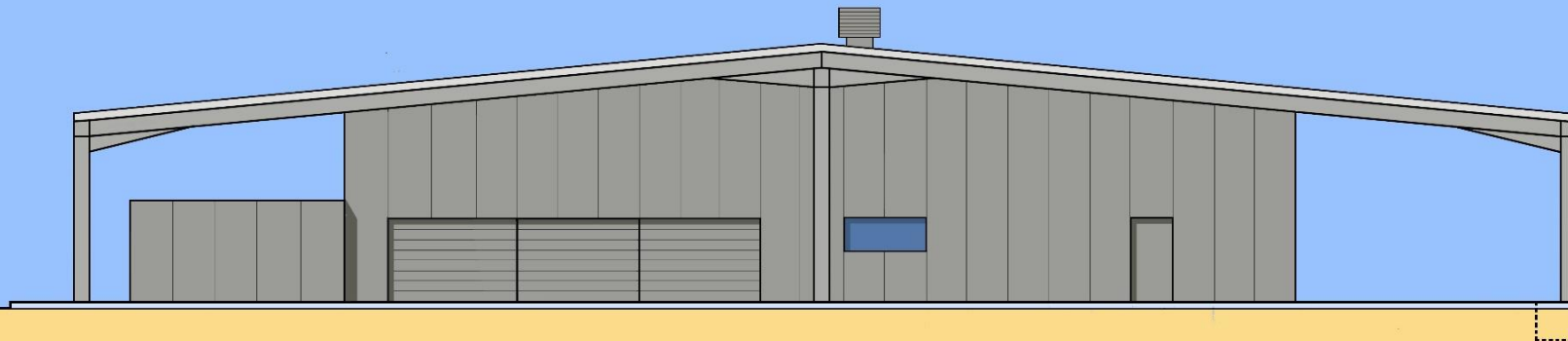
Dispatch Dock &
Growers Bins holding storage

Waste Bins Cubicle

Emergency Exit
Central corridor

Freezing Room

NORTH ELEVATION



Office

Batteries bank &
Power Distribution

Walking Stakers
charging bay

Roof space
access

Arrivals Dock

SOUTH ELEVATION